



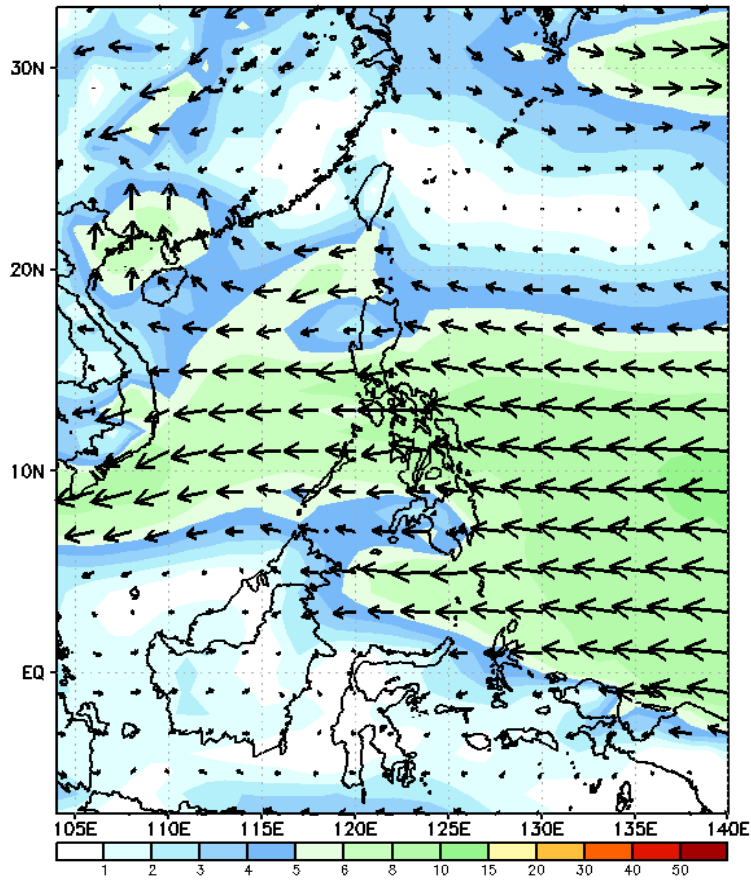
Week 1 & Week 2 Forecast for the Philippines using GEFS Model



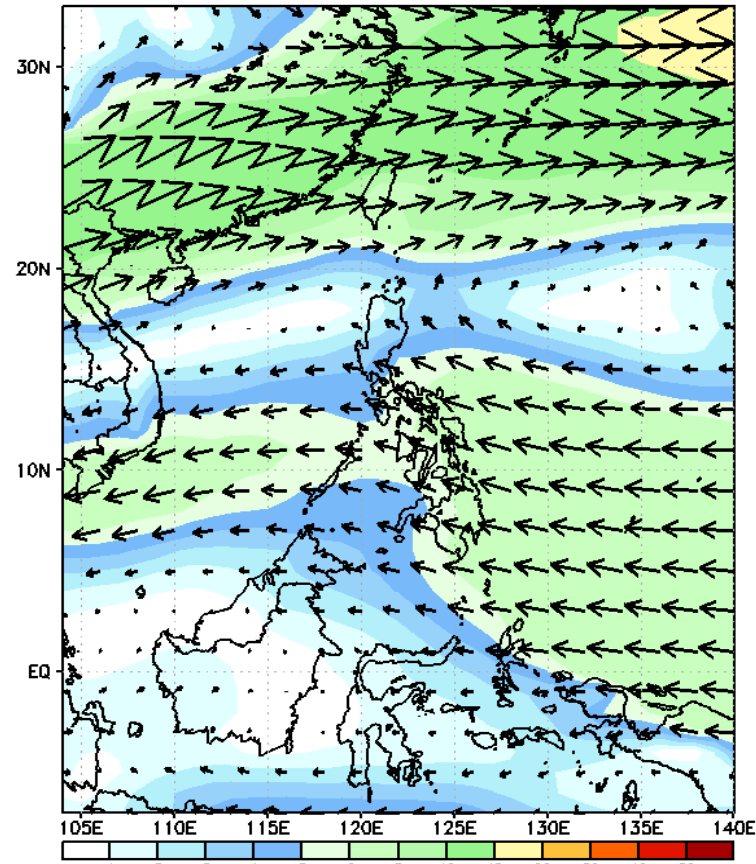
GEFS Week-1 Wind Forecasts:

Week 1: Mar 03-09, 2025

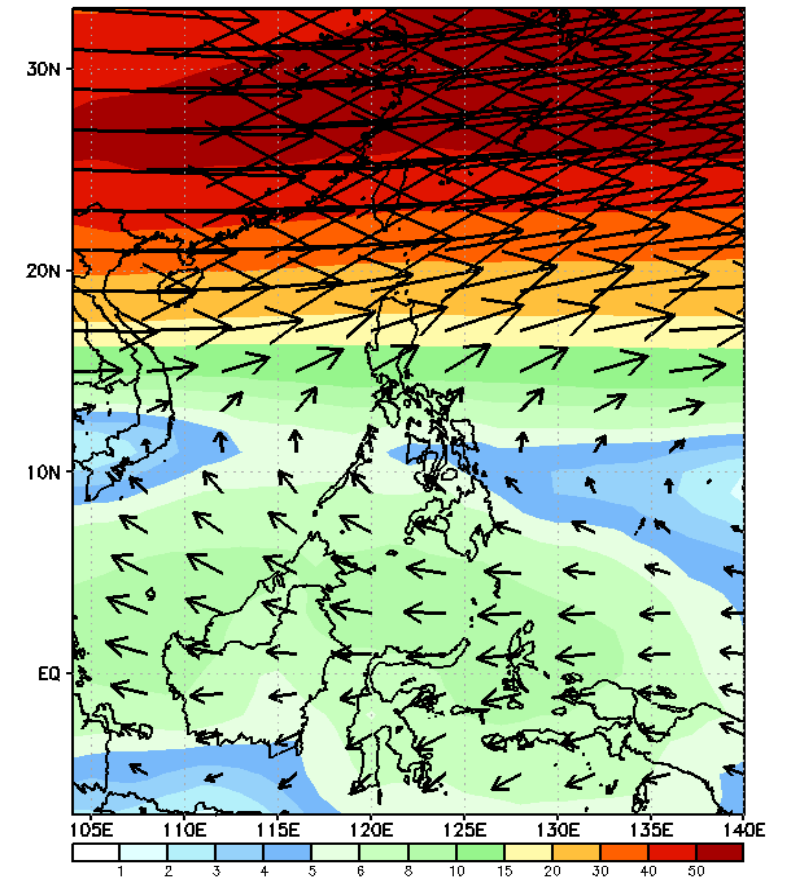
GEFS Week-1 850-hPa Wind Total
Valid: 20250303 - 20250309



GEFS Week-1 700-hPa Wind Total
Valid: 20250303 - 20250309

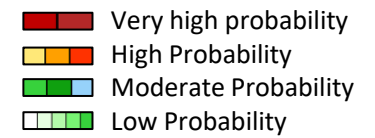


GEFS Week-1 200-hPa Wind Total
Valid: 20250303 - 20250309



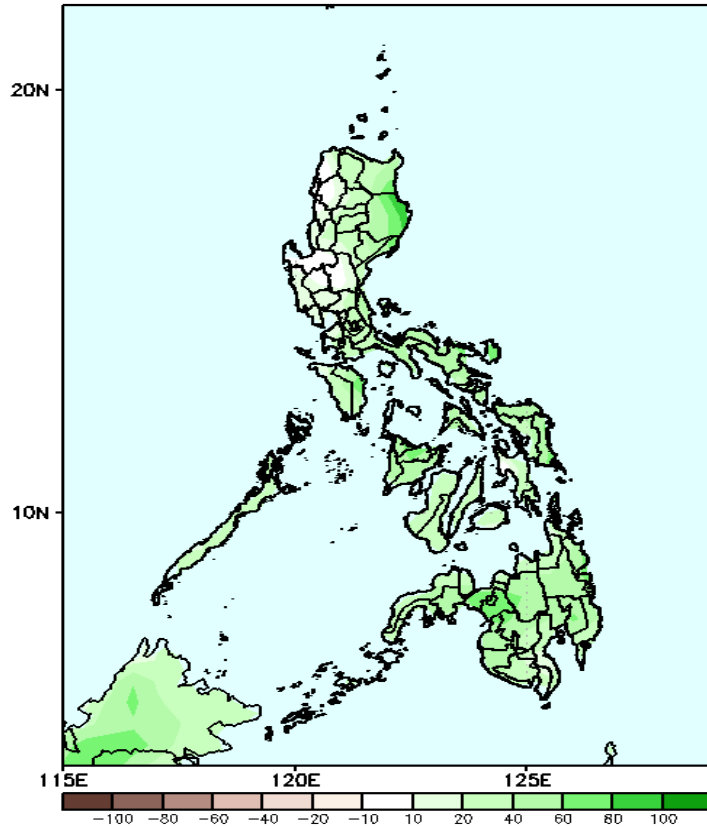
Northeast Monsoon affecting Northern Luzon while Easterlies affecting the rest of the country during the forecast period

Precipitation Anomaly and Exceedance Probability > 25/50 mm



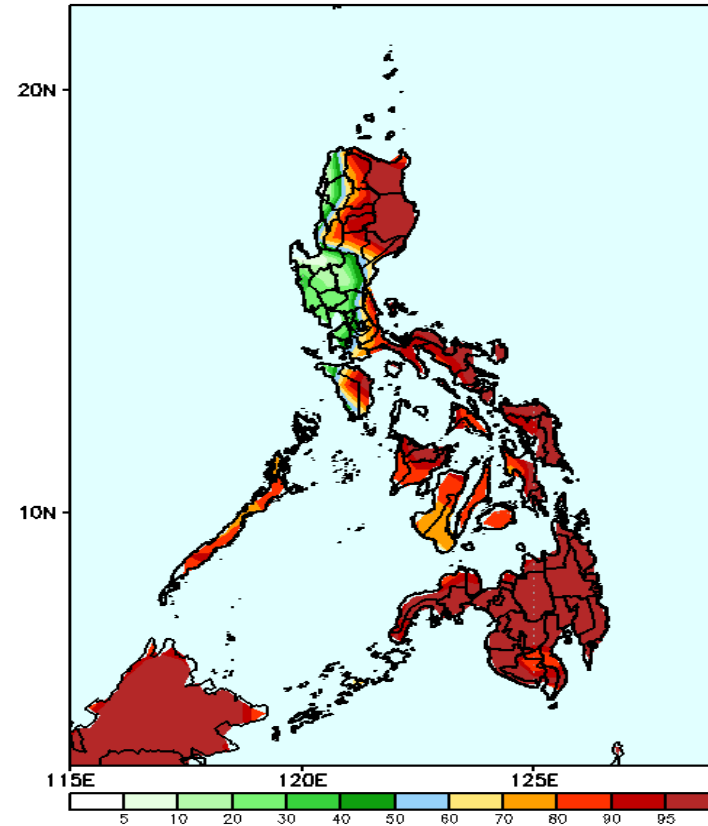
Week 1: Mar 03-09, 2025

GEFS Week-1 Precip Anomaly
Valid: 20250303 - 20250309



Increase of rainfall of 20-80mm is expected over Eastern Mindanao

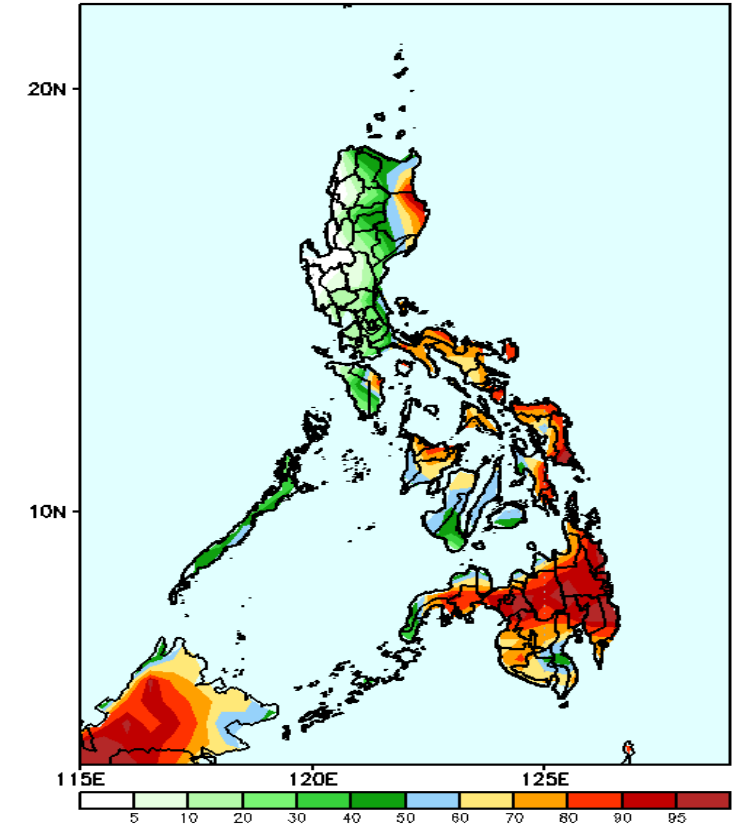
GEFS Week-1 Exceedance Prob. > 25mm
Valid: 20250303 - 20250309



Probability to Exceed 25mm

- High to very high over eastern parts of Luzon, CAR, and most parts of Visayas and Mindanao.
- Moderate to high over southern Luzon
- Low to moderate over the rest of Luzon.

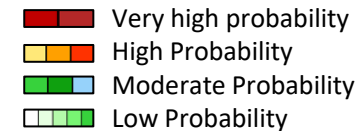
GEFS Week-1 Exceedance Prob. > 50mm
Valid: 20250303 - 20250309



Probability to Exceed 50mm

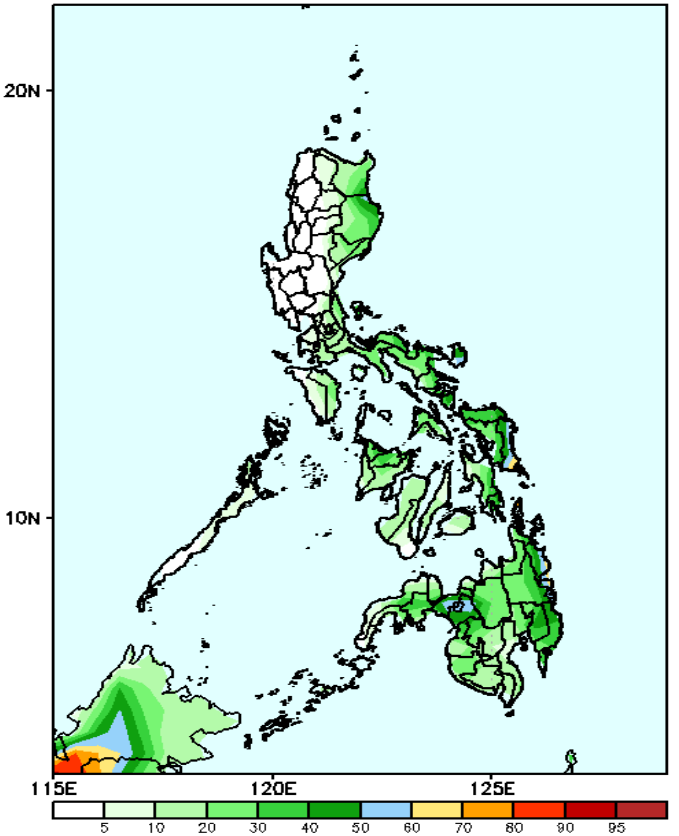
- High to very high over Northern and Eastern Samar and most of Eastern and Central Mindanao;
- Moderate to high over most parts of Eastern Luzon, Bicol Region, MIMAROPA except for Occidental Mindoro, Visayas, and the rest of Mindanao;
- Low to moderate over the rest of Luzon.

Exceedance Probability > 100/150/200 mm



Week 1: Mar 03-09, 2025

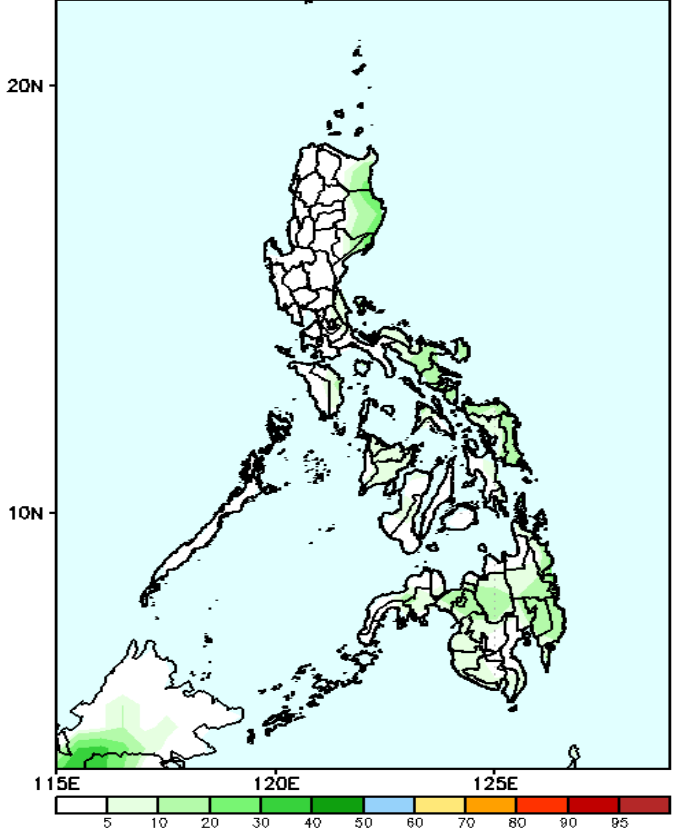
GEFS Week-1 Exceedance Prob. > 100mm
Valid: 20250303 - 20250309



Probability to Exceed 100mm

- Moderate to high over the eastern sections of Bicol Region, Northern and Eastern Samar and Surigao and Lanao Provinces;
- Low to moderate over the rest of Eastern Luzon, Visayas and Mindanao;
- Low over the rest of Luzon.

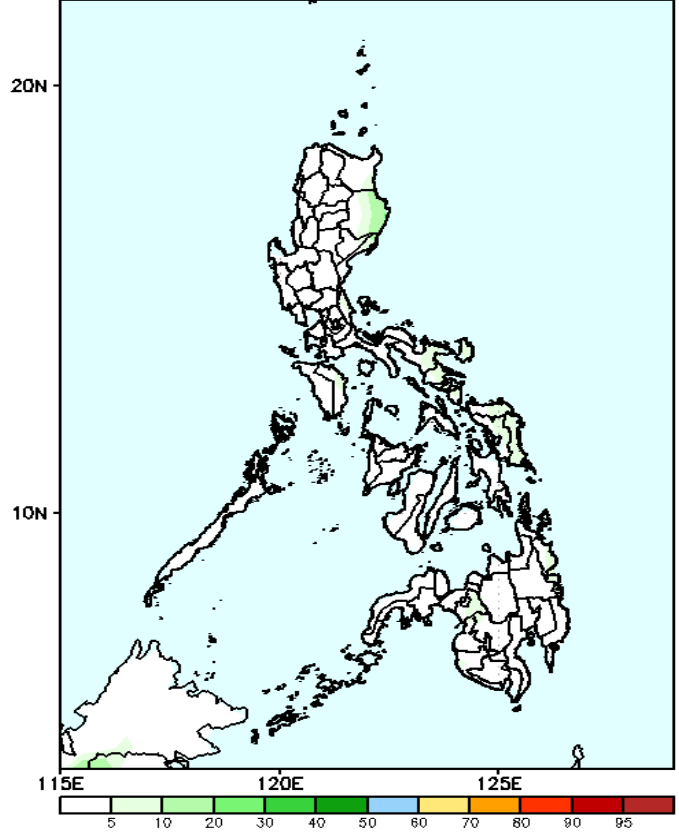
GEFS Week-1 Exceedance Prob. > 150mm
Valid: 20250303 - 20250309



Probability to Exceed 150mm

- Low across the country.

GEFS Week-1 Exceedance Prob. > 200mm
Valid: 20250303 - 20250309



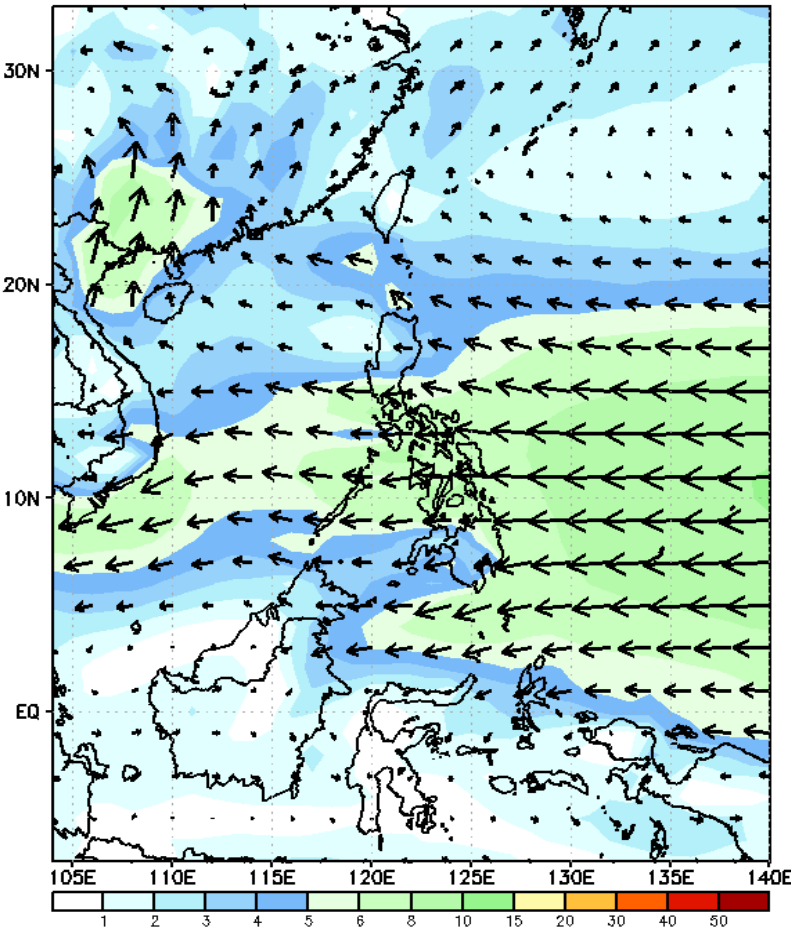
Probability to Exceed 200mm

- Low across the country.

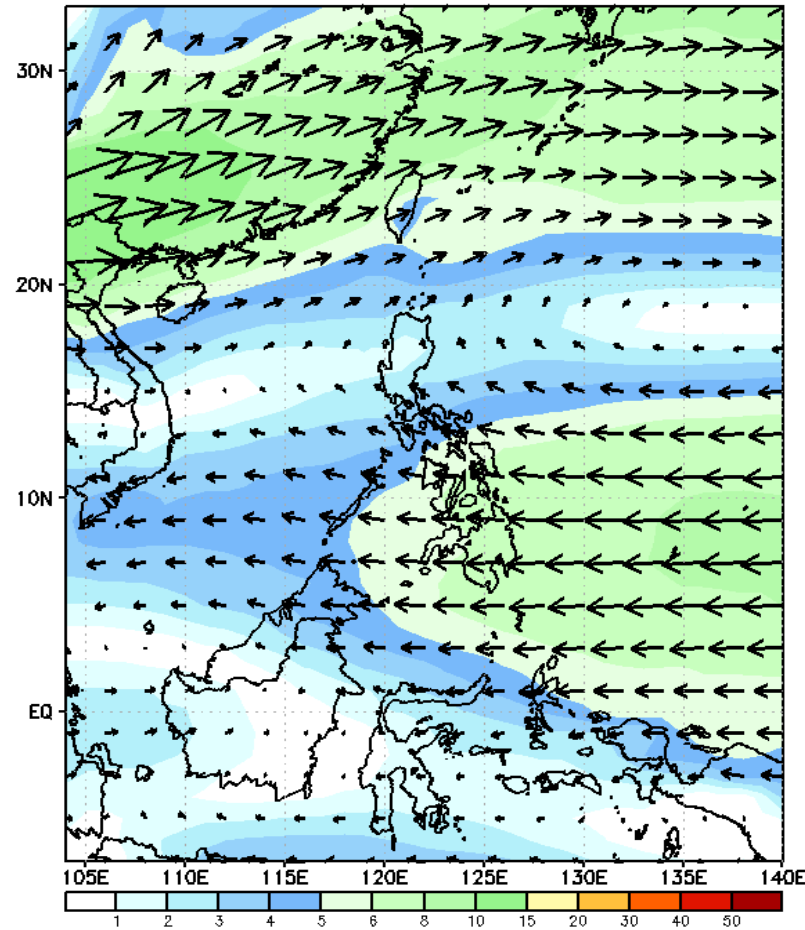
GEFS Week-2 Wind Forecasts:

Week 2: Mar 10-16, 2025

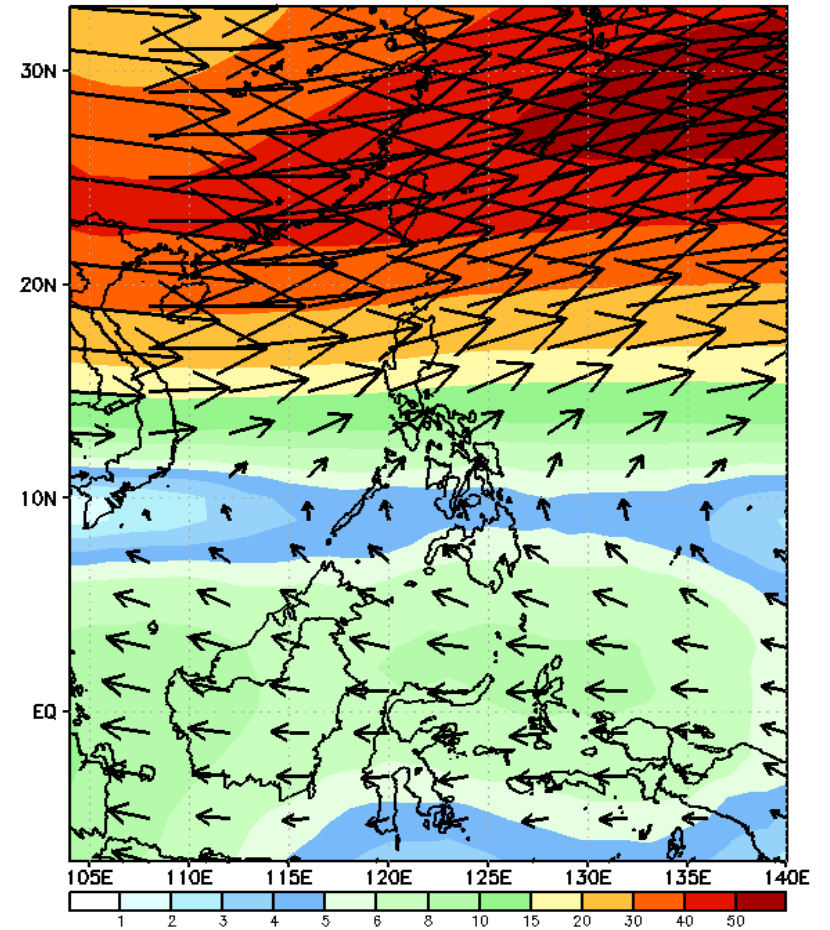
GEFS Week-2 850-hPa Wind Total
Valid: 20250310 - 20250316



GEFS Week-2 700-hPa Wind Total
Valid: 20250310 - 20250316

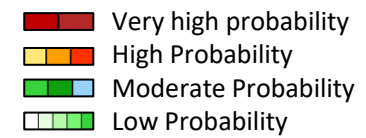


GEFS Week-2 200-hPa Wind Total
Valid: 20250310 - 20250316



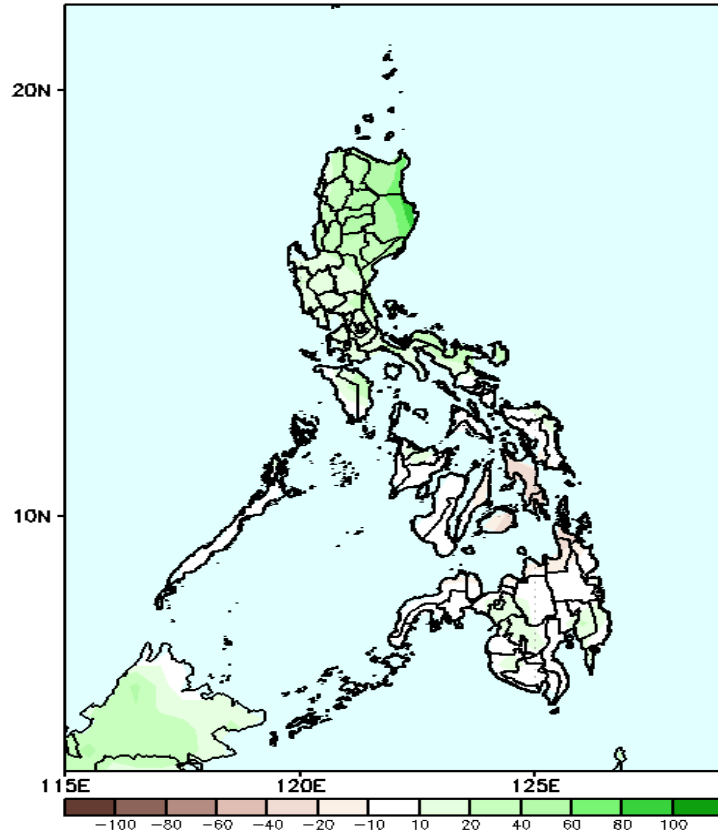
Northeast Monsoon affecting Extreme Northern Luzon while Easterlies affecting the rest of the country during the forecast period

Precipitation Anomaly and Exceedance Probability > 25/50 mm



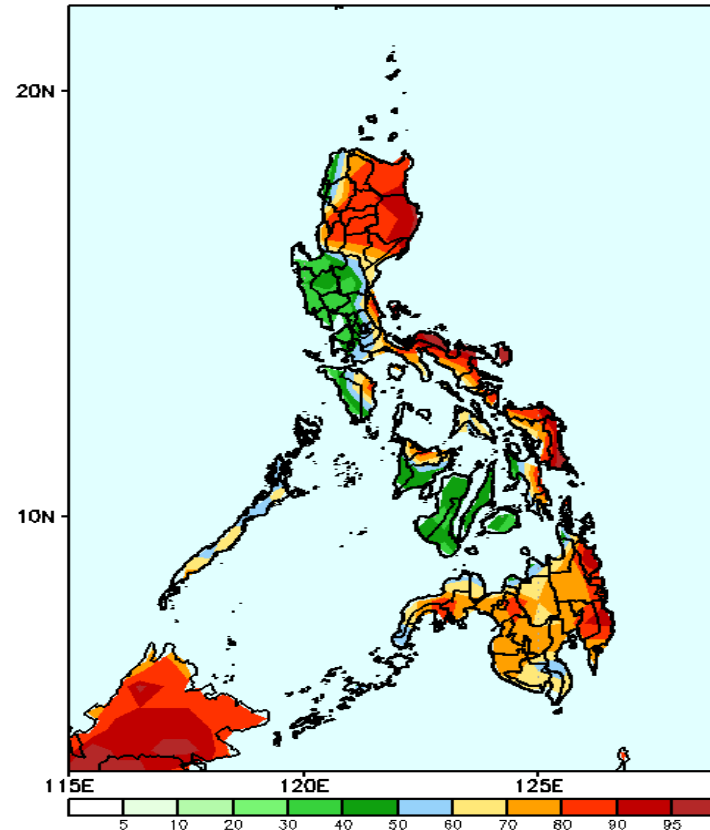
Week 2: Mar 10-16, 2025

GEFS Week-2 Precip Anomaly
Valid: 20250310 - 20250316



Increase of rainfall of 20-80mm is expected over most part of Luzon and western and southeastern Luzon while 10-40mm rainfall deficit in Leyte provinces and central Visayas.

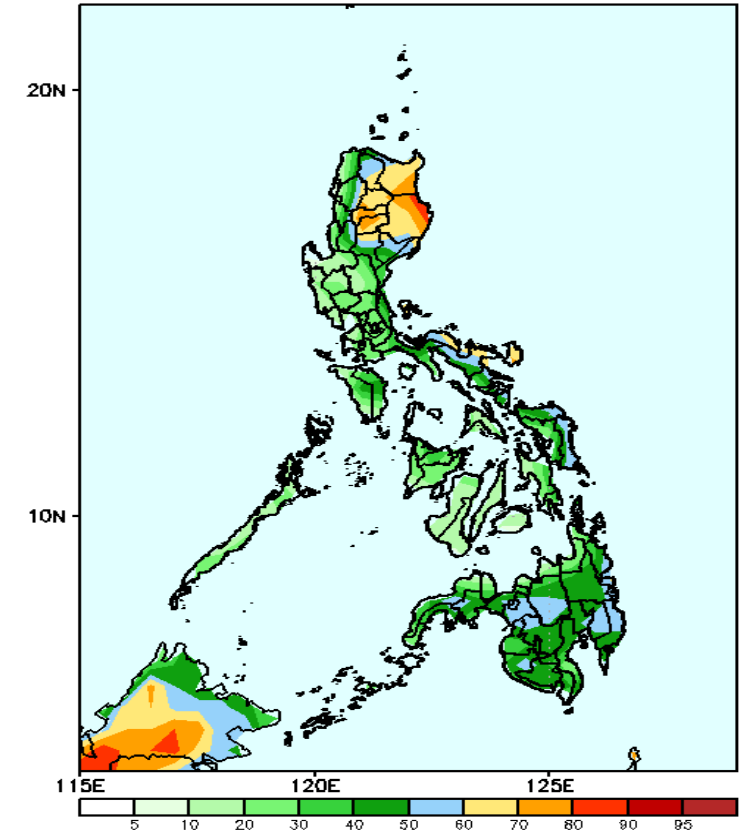
GEFS Week-2 Exceedance Prob. > 25mm
Valid: 20250310 - 20250316



Probability to Exceed 25mm

- High to very high over most parts of northern Luzon, Bicol Region, Eastern Visayas and eastern Mindanao;
- Moderate to high over Ilocos Region, and the rest of the country

GEFS Week-2 Exceedance Prob. > 50mm
Valid: 20250310 - 20250316



Probability to Exceed 50mm

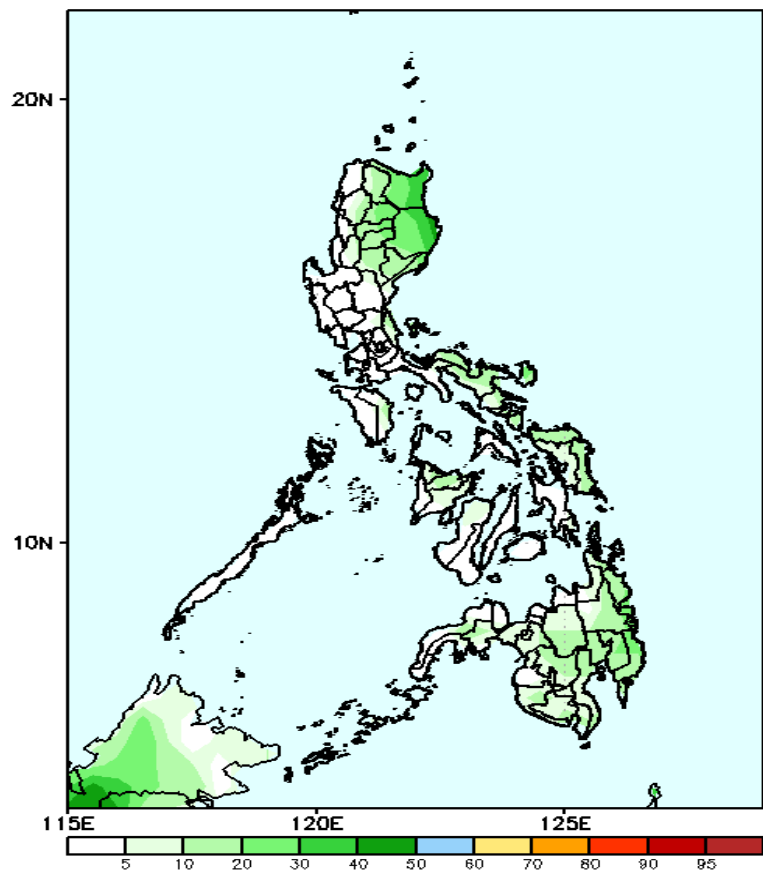
- Moderate to high over CAR, Cagayan Valley, northern part of Aurora and Bicol Region;
- Low to moderate over the rest of the country.

Exceedance Probability > 100/150/200 mm

- Very high probability
- High Probability
- Moderate Probability
- Low Probability

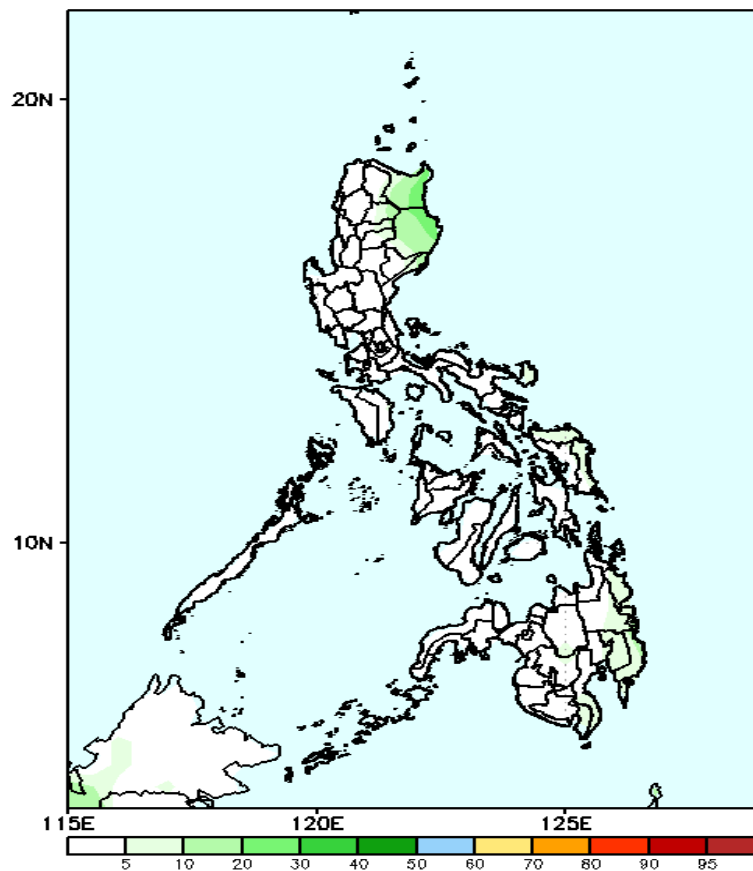
Week 2: Mar 10-16, 2025

GEFS Week-2 Exceedance Prob. > 100mm
Valid: 20250310 - 20250316



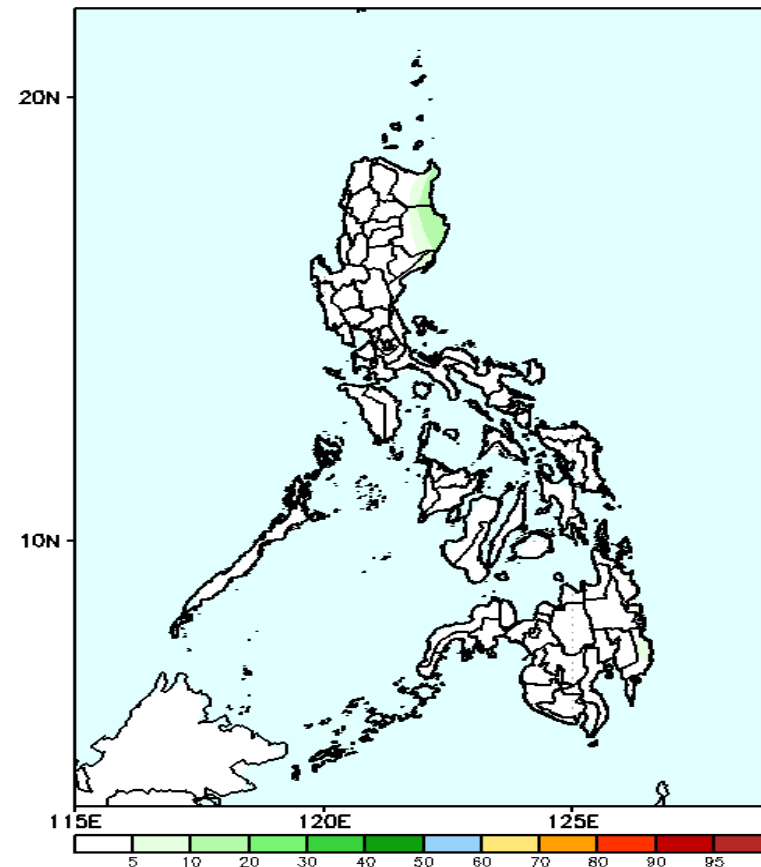
Probability to Exceed 100mm
•Low to moderate across the country.

GEFS Week-2 Exceedance Prob. > 150mm
Valid: 20250310 - 20250316



Probability to Exceed 150mm
•Low across the country.

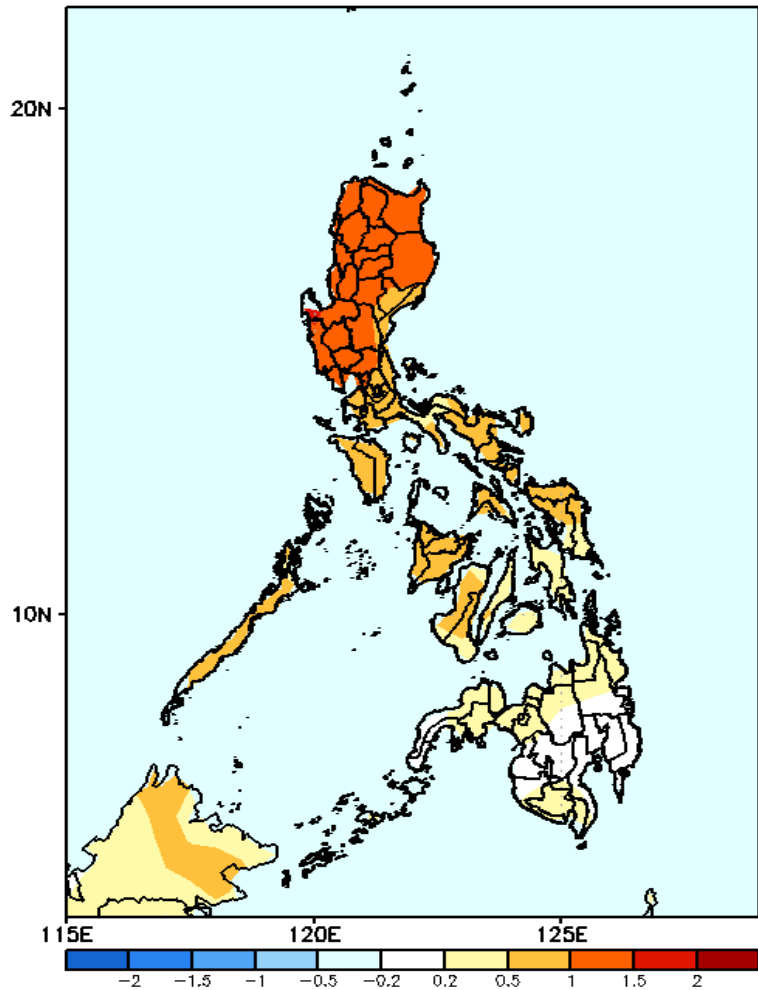
GEFS Week-2 Exceedance Prob. > 200mm
Valid: 20250310 - 20250316



Probability to Exceed 200mm
•Low across the country.

GEFS Week-1 & 2 Forecasts: T2m Anomaly

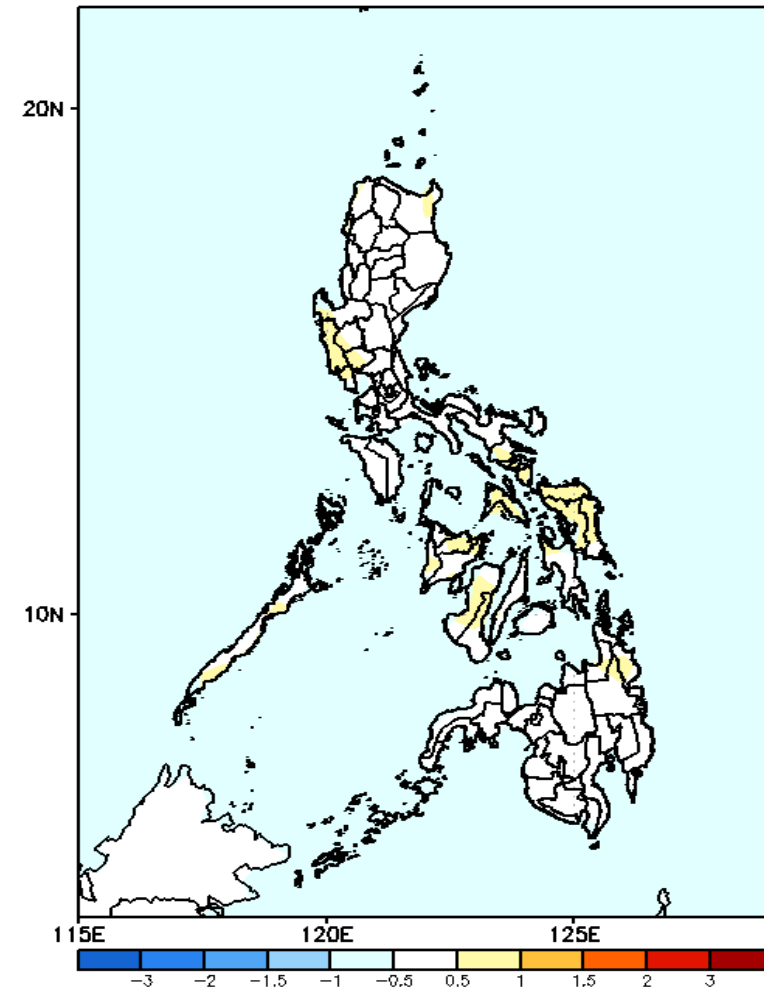
GEFS Week-1 T2m Anomaly
Valid: 20250303 – 20250309



2m Temperature Week 1: Mar 03-09, 2025

Slightly warmer to warmer than average air temperature will likely be experienced in Luzon and Visayas while near average surface air temperatures is expected in Mindanao.

GEFS Week-2 T2m Anomaly
Valid: 20250310 – 20250316



2m Temperature Week 2: Mar 10-16, 2025

Near to slightly warmer than average air temperature will likely be experienced in most parts of the country.